

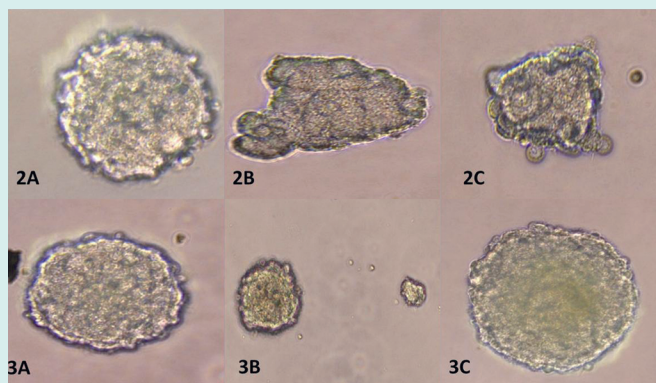


# Journal of CLINICAL and EXPERIMENTAL INVESTIGATIONS

pISSN 1309-8578 eISSN 1309-6621 Volume 3 Issue 4 December 2012

## ISSUE HIGHLIGHTS

- Neurotoxic effects of ethanol on the cerebellar and cortical neurospheres isolated from E14 mouse embryo
- Effect of smoking on the response to raloxifene treatment in postmenopausal osteoporosis
- Frequencies of MTHFR C677T and MTHFR A1298C polymorphisms in persons with polymorphic MTHFR gene
- Mortality and morbidity analysis in neonates supported by invasive mechanical ventilation  
Effect of parenteral nutrition solutions on biofilm formation of Staphylococci: An experimental study
- Serum levels of prolidase and ischemia modified albumin in patients with multiple sclerosis



## ABOUT THE COVER

- Phase contrast photomicrograph of neurospheres in different groups of cortical and cerebellar neural stem cell culture after ethanol treatment.

2A. Controls-cortical culture, 2B. Low dose ethanol-cortical culture, 2C. High dose ethanol-cortical culture,

3A. Controls-cerebellar culture, 3B. Low dose ethanol-cerebellar culture, 3C. High dose ethanol - cerebellar culture. (200X)

**Citation Abbreviation:**

**J Clin Exp Invest**

**Published four times a year**

**Open access: [www.jceionline.org](http://www.jceionline.org)**